

Full Spectrum Bliss

Product Name "250mg Active Cannabinoid" Intimate Oil
Product Description 60ml Intimate Oil; 0.5% active hemp extract infused in MCT (fractionated coconut oil), and Cacao Seed Butter
Lot Number 19AB080
Expiration Date March 2020
Date of Production (Batch Date) April 2019
Batch Size: 5500 units **Quantity Produced:** 4775 units

Raw Ingredients

Ingredient	Manufacturer	Lot Number
MCT Oil	Bulk Apothecary/Greenfield	67859/BTB1810114
Cacao Seed Butter	Cocoa Supply	MR0-018-008
Cetearyl Alcohol	Essential Wholesale & Labs	18OH7101BS311MM
Arginine in Water (500mg/ml)	Ecofibre Industries Operations	190401-Arginine
Peppermint Extract	Bulk Apothecary	71066
Black Pepper Extract	Bulk Apothecary	69844
Cannabinoids	Ecofibre Industries Operations	CHG-Rankin17-01
Phenoxyethanol	Essential Wholesale & Labs	270H7394PW


Jamie Paz - Quality Manager


Date



Ananda's 100% Kentucky grown hemp is planted, harvested, and dried using existing Kentucky tobacco infrastructure and knowledge. Kentucky farmers are now making the switch to farming Hemp with the passing of the 2018 Farm Bill and Ananda is right beside them providing superior genetics and support.

Manufactured By:
Ananda Professional
PO Box 648
Cynthiana, KY 41031
888-388-1119
hello@anandaprofessional.com
www.AnandaProfessional.com

These statements have not been evaluated by the Food and Drug Administration. This product is not intended to diagnose, treat, cure, or prevent any disease.

Manufactured By:
Ananda Hemp
PO Box 648
Cynthiana, KY 41031
888-388-1119
hello@anandahemp.com
www.AnandaHemp.com

Marihuana Potency Analysis by High Performance Liquid Chromatography

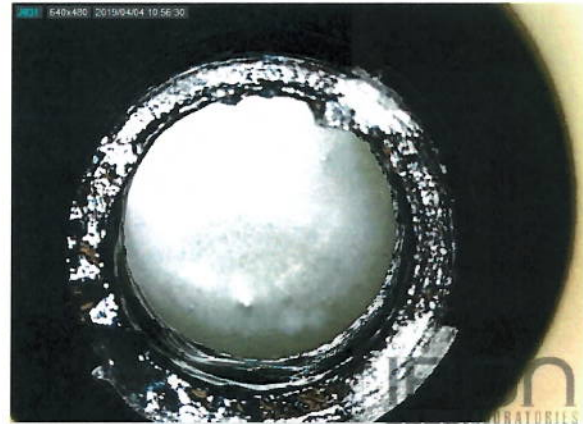
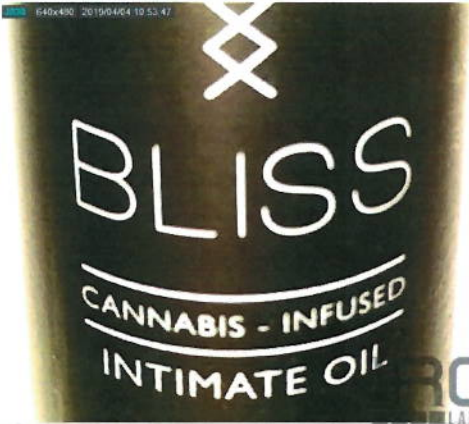
Testing Accreditation #: 77802

Test Certificate #: 116205-001

Client Name, Sample Details
Ananda
 Cynthiana, KY 41031
Sample: 19AB080
Type: Topical
Method: FE04U HPLC1100-1

Test Conditions
Prepsheet ID#: MIP190404b
Scale: XS205-MI2
Temp: 23.0 °C
Baro PE: 995.8 hPa
Analyst: JRT
Technician: KEB

Sample ID#: 116205
Harvest/Process Date: 04/04/2019
Serving Size (g): 1
Date Received: 04/04/2019
Test Date: 04/04/2019
Valid Through: 04/04/2020



Test Compounds	THC	THCA	CBD	CBDA	CBN	CBG*	CBC*	THCV*	CBDV*	Total Cannabinoids*	Total THC	Total CBD	Calc Max Total Cannabinoids*
Amount (%)	0.1	N/D	0.4	N/D	N/D	0.0	0.0	N/D	0.0	0.6	0.1	0.4	0.6
Amount (mg/g)	1.2	N/D	3.8	N/D	N/D	0.2	0.3	N/D	0.1	5.6	1.2	3.8	5.6
Amount per Serving (mg)	1.2	N/D	3.8	N/D	N/D	0.2	0.3	N/D	0.1	5.6	Serving Size~ (g):		1.0
LOQ (mg/g)	0.1	0.1	0.1	0.1	0.1	0.1	0.1	0.1	0.1		%Decarb.	THC	CBD
±%RPD	15.4	2.3	6.3	6.1	5.6	4.3	2.3	4.2	3.4			100%	100%

1 serving = 1 g (declared)

LOQ = Limit of Quantitation; %RPD = Relative Percent Deviation; %RSD = Relative Standard Deviation; N/D = Not Detected

*Designates values that are not currently included in the accredited scope of Iron Laboratories.

*** Designates tests that use the method FE-45.

Total THC and CBD is the calculated sum of THC or CBD and the amount of THC or CBD derived from THCA or CBDA, respectively. These values are calculated by applying a molar correction factor of 0.877 to the THCA or the CBDA value. Calc Max Total Cannabinoids is the sum of Total THC, Total CBD, CBN, CBG, CBC, THCV, and CBDV.

%Decarb. THC and CBD refers to the percentage of THC or CBD relative to THCA or CBDA, respectively.

This certificate shall not be reproduced except in full, without written approval of Iron Laboratories, LLC.

Andrea C. Ruppel
 Andrea C. Ruppel, Lab Manager



Mackenzie E. Hyman
 Mackenzie E. Hyman, Quality Manager

Iron Laboratories, LLC is an ISO/IEC 17025:2005 Testing Laboratory laboratory, accredited by (PJLA) Perry Johnson Laboratory Accreditation, Certificate No. 77802

Tested by Iron Laboratories Michigan, 1825 E. West Maple Walled Lake, MI 48390

Quality Approved 4/5/19 AH

Client Name, Sample Details
 Ananda
 Cynthiana, KY 41031
 Sample: 19AB080
 Type: Topical

Test Conditions
 Scale: PB303-S
 Temp: 23.8 °C
 Baro Pressure: 994 hPa
 Analyst: ACR
 Technician: ARH

Sample ID#: 116205
 Harvest/Process Date: 04/04/2019
 Serving Size (g): 1
 Date Received: 04/04/2019
 Test Date: 04/05/2019
 Valid Through: 04/04/2020



Test	Method	MCFU (CFU/g)	LOD (CFU/g)	Status (CFU/g)
Total Aerobic	FE-62	100,000	1	* Pass/945
Yeast & Mold	FE-62	10,000	1	Pass/<LOD
Bile-tolerant gram-negative bacteria	FE-62	1,000	1	Pass/<LOD
Total Coliforms	FE-62	1,000	1	Pass/<LOD
E. Coli	FE-62	1	1	Pass/Not Present
Salmonella	FE-62	1	1	Pass/Not Present
Aspergillus spp.	FE-62	1	1	Pass/Not Present

Maximum Colony Forming Units (MCFU) represents the minimum value that a test would need to achieve in order to be considered a failed result (if applicable). LOD is the Limit of Detection for the method. CFU/g = Colony Forming Units per gram. Aspergillus spp. consists of A. flavus, A. fumigatus, A. niger, and A. terreus.

Sample was sampled and tested in accordance with the Safety Compliance Facility Information published on September 28, 2018.

This certificate shall not be reproduced except in full, without written approval of Iron Laboratories, LLC.

Mackenzie E. Hyman
 Mackenzie E. Hyman, Quality Manager



Andrea C. Ruppel
 Andrea C. Ruppel, Lab Manager

Tested by Iron Laboratories Michigan, 1825 E. West Maple Walled Lake, MI 48390

* limit 10,000 CFU/g ; Quality Approved 4/12/19 JP